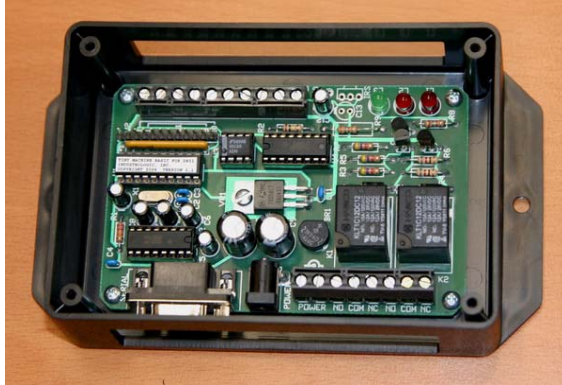


# Door Controller Firmware Upload

## Sept 2006



### 1. Introduction

The Door Controller contains a microprocessor that is programmed to provide the needed functionality. Under some circumstances the firmware in the controller must be updated.

### 2. Connect the Door Controller to your computer

Connect one end of the 9-pin serial cable to the Door Controller and the other to any available serial port on your computer. If you do not have any serial ports available, please see [Adding serial ports to your computer](#) above.

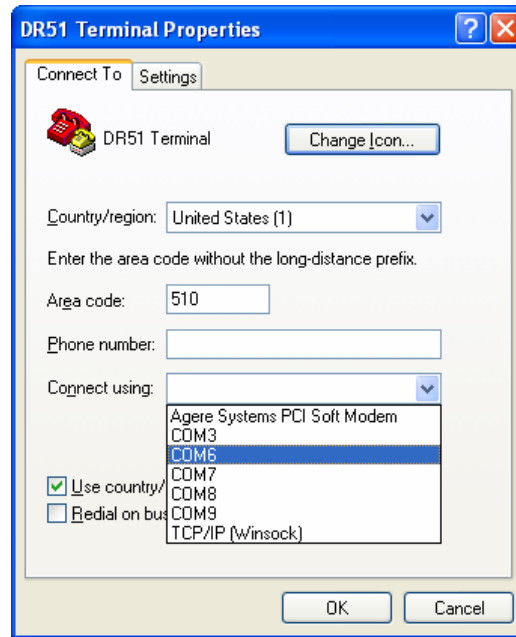
Connect the included power supply to the Door Controller. The green LED in the Door Controller should blink three times and then remain ON. **Note: Do not connect any other power supply to the Door Controller, as this can damage the electronics! The power supply should be labeled "Output: 12 VDC, 500ma".**

### 3. Uploading the Firmware (Gym Assistant v1.5)

**Note: If you are using Gym Assistant Version 2.0, please skip down to the next section.**

- Update your Gym Assistant installation to the most recent version by selecting **Download Update** from the **Help** menu.
- Exit the GateKeeper application.
- Open My Computer, then open the following items:
  - Local Disk C:
  - Gym Assistant 1.5 folder
  - Plug-Ins folder
  - Door Controller folder
- Open the item called **DR51 Terminal**
- An alert will appear: "Unable to open COM12. Please check your port settings." Click OK.
- Select Properties from the File menu. Click OK in the alert window that appears.

- The DR51 Terminal Properties window will appear:



- Set the **Connect using** field to the COM port to which you have connected the door controller, then click OK.
- Select **Call** from the **Call** menu. The message “Connected” should appear in the lower-left corner of the HyperTerminal window.
- Press the ESC key on your keyboard. The “>” prompt should appear.
- Type the command “NEW” (upper-case, no quotes) and press the ENTER key.
- Select Send Text File from the Transfer menu.
- In the Send Text File window that appears, select **AccessControl2** and then click **Open**.
- As the data is transmitted to the controller you will see numerous “Instruction Error” messages. Do not be alarmed because these errors are normal.
- When the upload is completed, the line “255 LED=0” will be displayed.
- Type the command “BOOTON” (upper-case, no quotes) and press the ENTER key.
- Unplug the power supply from the controller.
- When you plug in the controller, the green LED should blink three times and then stay on. This is the indication that the controller is functioning correctly.
- Select Exit from the File menu.
- Click Yes in the window that appears.
- Start GateKeeper.