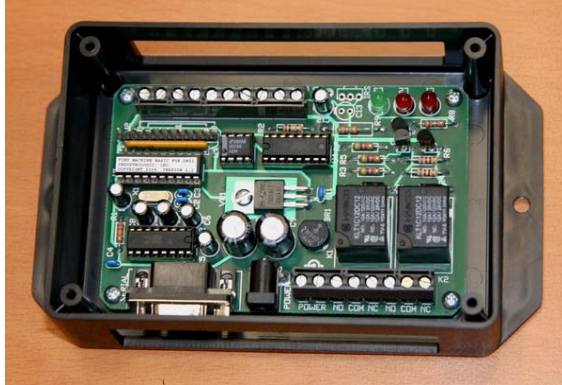


Door Controller Firmware Upload

Sept 2006



1. Introduction

The Door Controller contains a microprocessor that is programmed to provide the needed functionality. Under some circumstances the firmware in the controller must be updated.

2. Connect the Door Controller to your computer

Connect one end of the 9-pin serial cable to the Door Controller and the other to any available serial port on your computer. If you do not have any serial ports available, please see [Adding serial ports to your computer](#) above.

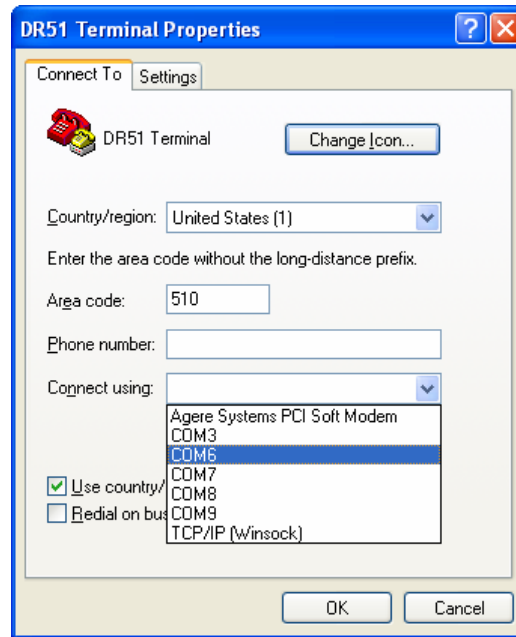
Connect the included power supply to the Door Controller. The green LED in the Door Controller should blink three times and then remain ON. **Note: Do not connect any other power supply to the Door Controller, as this can damage the electronics! The power supply should be labeled "Output: 12 VDC, 500ma".**

3. Uploading the Firmware (Gym Assistant v1.5)

Note: If you are using Gym Assistant Version 2.0, please skip down to the next section.

- Update your Gym Assistant installation to the most recent version by selecting **Download Update** from the **Help** menu.
- Exit the GateKeeper application.
- Open My Computer, then open the following items:
 - Local Disk C:
 - Gym Assistant 1.5 folder
 - Plug-Ins folder
 - Door Controller folder
- Open the item called **DR51 Terminal**
- An alert will appear: "Unable to open COM12. Please check your port settings." Click OK.
- Select Properties from the File menu. Click OK in the alert window that appears.

- The DR51 Terminal Properties window will appear:



- Set the **Connect using** field to the COM port to which you have connected the door controller, then click OK.
- Select **Call** from the **Call** menu. The message “Connected” should appear in the lower-left corner of the HyperTerminal window.
- Press the ESC key on your keyboard. The “>” prompt should appear.
- Type the command “NEW” (upper-case, no quotes) and press the ENTER key.
- Select Send Text File from the Transfer menu.
- In the Send Text File window that appears, select **AccessControl2** and then click **Open**.
- As the data is transmitted to the controller you will see numerous “Instruction Error” messages. Do not be alarmed because these errors are normal.
- When the upload is completed, the line “255 LED=0” will be displayed.
- Type the command “BOOTON” (upper-case, no quotes) and press the ENTER key.
- Unplug the power supply from the controller.
- When you plug in the controller, the green LED should blink three times and then stay on. This is the indication that the controller is functioning correctly.
- Select Exit from the File menu.
- Click Yes in the window that appears.
- Start GateKeeper.