

Code Imager Firmware Update

January 2026

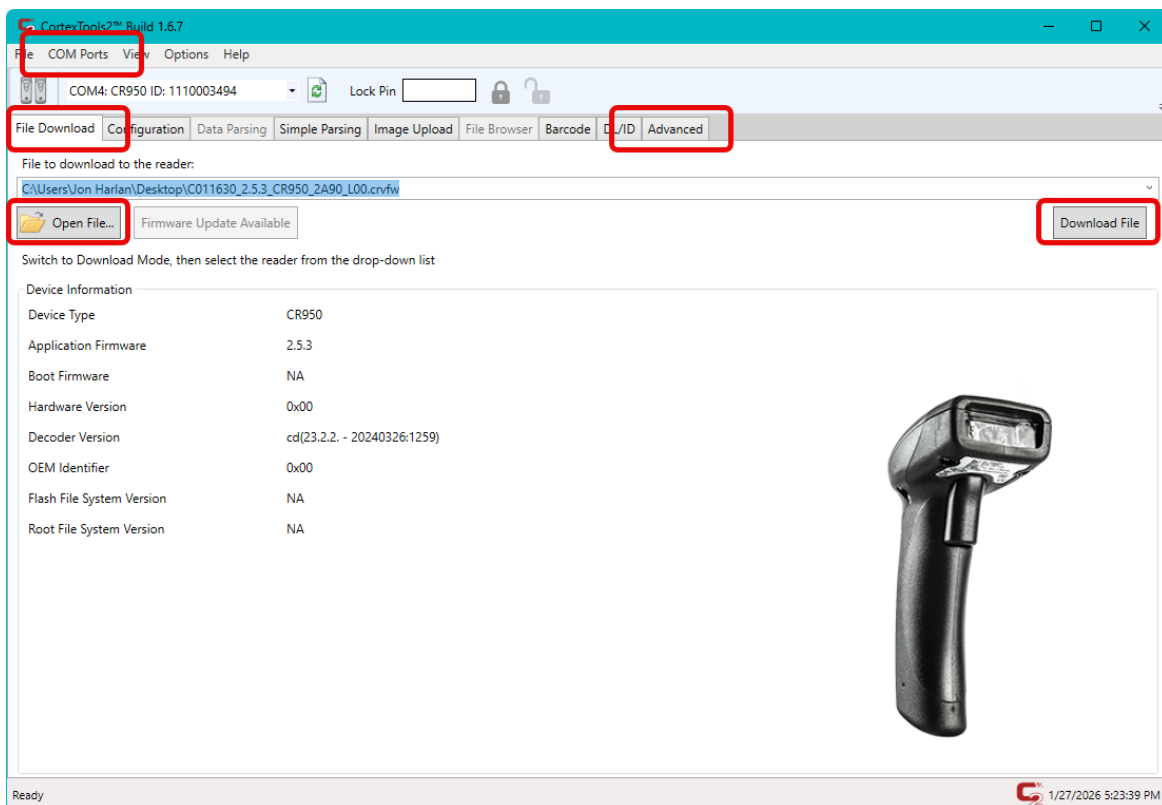
This document includes instructions for how to upgrade firmware in a **Code 950** imager.

You can download the firmware updater at:

<https://www.gymassistant.com/utilities>

Click **CODE Firmware Update** to download the file **VCOMInstall_v2.5.0.0.zip**.

Extract from the downloaded file, then launch the enclosed **CortexTools2** application.



Connect to the Reader

- Click the **COM Ports** menu and select the **COMX (CR82X)** for the correct serial port.
- Select the **Baud Rate** of **115200**, then click **OK**.
- If no Device Type information appears after a few seconds:
 - Click the **COM Ports** menu again and select the COM port with the checkbox to unselect it.
 - Click the **COM Ports** menu and select the same COM port, but select a Baud Rate of 9600.

Reset the reader to Factory Settings

- Click the **Advanced** tab.
- Click **Factory Defaults**.
- After a few seconds the reader will beep.

Reconnect to the reader

- Click the **File Download** tab.
- Click the **COM Ports** menu and select the COM port with the checkbox to unselect it.
- Click the **COM Ports** menu and select the correct COM port.
- This time, select a **Baud Rate** of **115200**.

Download new firmware to the reader

- Click the **File Download** tab.
- Click Open File. Navigate to and open the firmware file, which will have an extension of **crvfw**.
- Click **Download File**.

The indicator on top of the reader will flash repeatedly until the file is process is finished. Download progress will be shown at the bottom of the window. While the update is installed, the indicator on top of the reader will turn red.

When the process is finished the scanner will beep, and the light on top of the scanner will go out.

Confirm that the update was installed

Reconnect to the reader:

- Click the **COM Ports** menu and select the COM port with the checkbox to unselect it.
- Click the **COM Ports** menu and select the same COM port.
- Once again, select a **Baud Rate** of **115200**.

- Confirm that the Firmware version is now **2.5.3**.
- Exit the Cortex Tools application.

Reconfigure the reader for GateKeeper

Scan each of the remaining barcodes codes in order, pausing for a few seconds between each one.



M20111_01

(1) Reset to Factory Defaults



M20112_01

(2) RS232 Defaults



M20163_01

(3) 9600 Baud



M20212_01

(4) Suffix Carriage Return

Unplug the scanner, then plug it in again.

Now test that the scanner works with GateKeeper. (No settings need to be changed in GateKeeper)