

# Gym Assistant DoorWatcher Setup

---



## Contents

- What is included in the box..... 2
- Tools that you will need ..... 2
- Before You Start ..... 3
- Connect the Video Hardware ..... 3
- Setup DoorWatcher Camera in GateKeeper ..... 5

# Introduction to DoorWatcher

DoorWatcher

## What is included in the box



CCTV Camera



BNC Video Cable



12VDC Power Supply



RCA Video/BNC Adapter



USB Video Adapter



Door Sensor

## Tools that you will need

- Phillips head screwdriver

## Before You Start

We strongly recommend that you connect the DoorWatcher hardware on your desktop and configure the software BEFORE mounting the camera and cables in their permanent location.

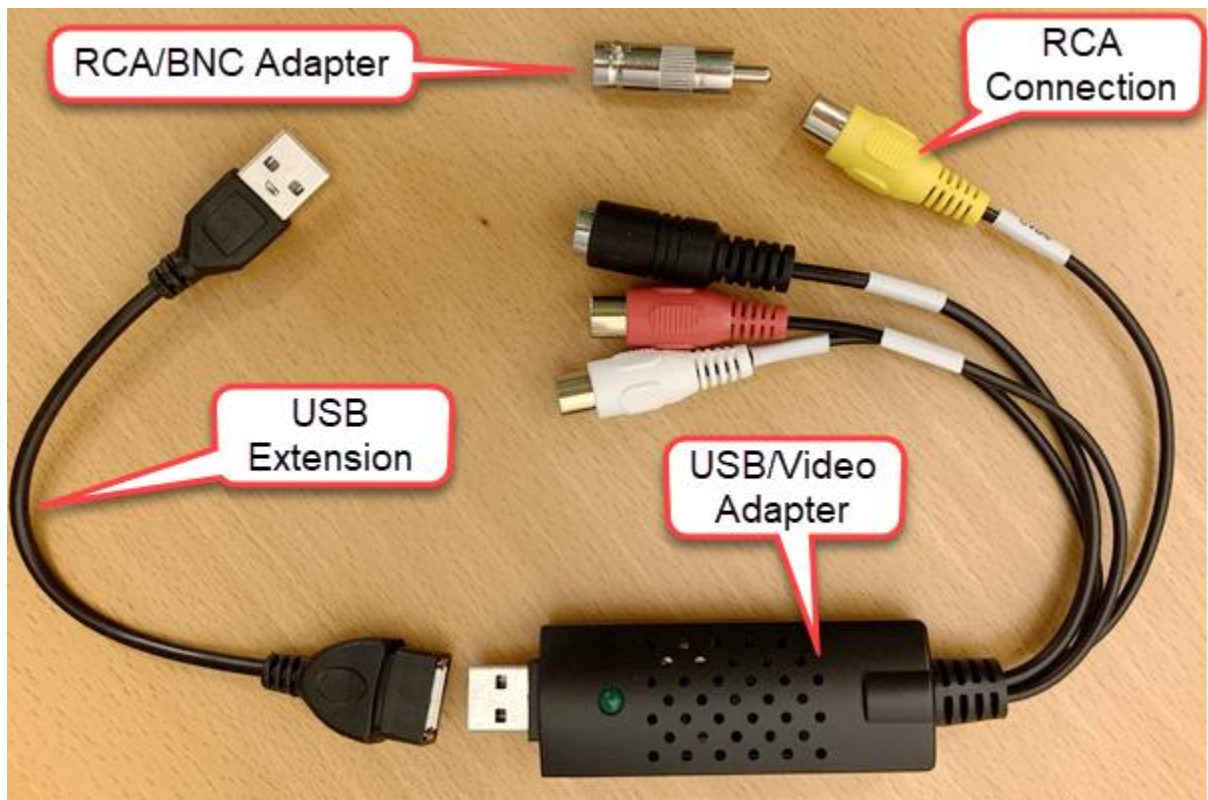
This will make it much easier to troubleshoot any issues that arise.

## Connect the Video Hardware

Connect the USB Extension to the USB/Video Adapter.

Connect the USB Extension to a USB port on your computer. Windows should automatically install drivers for the USB/Video Adapter.

Connect the RCA/BNC Adapter to the yellow RCA Connection on the USB/Video Adapter.





Connect the BNC Video Cable to the yellow RCA Connection on the USB/Video Adapter (through the RCA/BNC Adapter), using the end of the BNC cable that has the female power socket (red) and is labeled "To DVR Side Only".

Connect the 12VDC Power Supply to the red socket on the USB/Serial Adapter.



Connect the CCTV Camera video cable to the yellow BNC video cable, (Use the end of the BNC cable that has the red male power plug and is labeled "To Camera Side Only".)

Connect the red BNC video cable power plug into the CCTV Camera power socket.



## Setup DoorWatcher Camera in GateKeeper

In GateKeeper, select **Access Points / Ports** from the **Settings** menu.

Select the **Entrance** that will be used for DoorWatcher.

Click the **Actions** tab.

Specify the ACTIONS to take when member is successfully validated.

Record Visit:

Open Door/Turnstile

Play Check-In sounds

Display Member in Gym Assistant

Record as Check-Out

Record Tan Session

Send SMS to Member on Denied Entry

Send SMS to Club on Denied Entry:

Monitor door sensor


Record Video      Logitech HD Webcam C270     

Check the **Record Video** checkbox.

Click **Select Camera**.

Camera Selector

Select a camera:

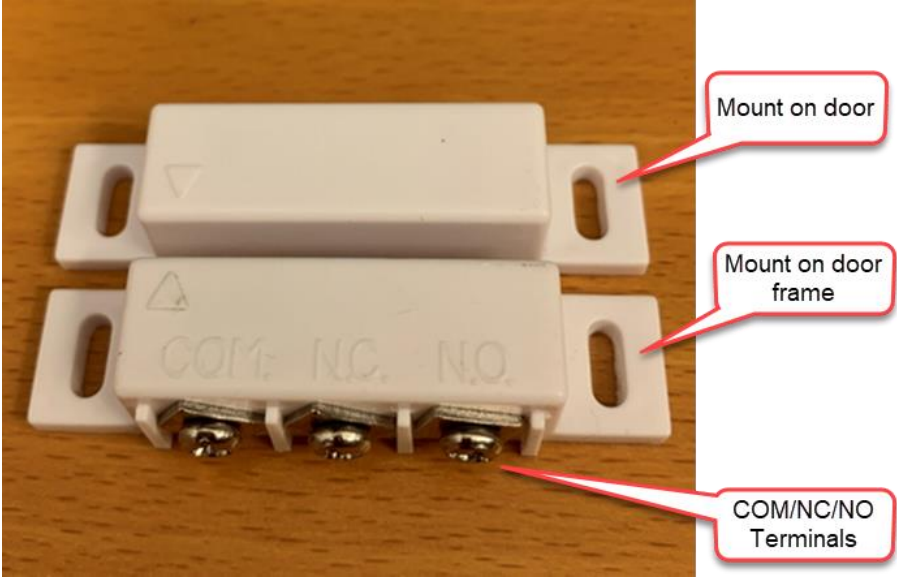


Select the camera labeled "**AV to USB2.0**".

Click **OK**.

### Connect the Door Sensor

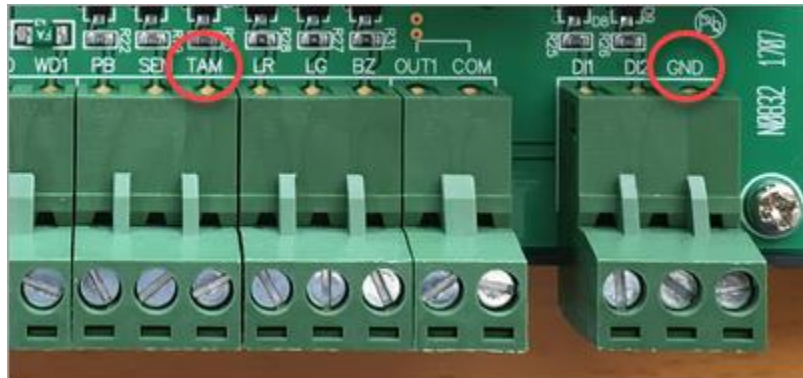
You will mount one half of the door sensor on the door, and the other half on the door frame. Be sure to mount the pieces close together but not touching (about 1/4" of clearance), with the arrows aligned.



## 721EX

On the sensor connect wires to the **COM** and **NC** terminals.

On the controller connect wires to the **TAM** and **GND** terminals.



721EX Connections

## 721V2

On the sensor connect wires to the **COM** and **NO** terminals.

On the controller connect wires to the **SEN** and **GND** terminals.

*Note: **Port0** on the controller corresponds to **Door1** in GateKeeper, and **Port1** on the controller corresponds to **Door2** in GateKeeper.*



721V2 Connections

On the door sensor connect wires to the COM and NC terminals.

Connect the other end of the sensor wires to the controller:

- 721EX – connect to TAM and GND terminals.
- 721V2 – connect to SEN and GND terminals.

## Setup Door Sensor in GateKeeper

In GateKeeper, select **Access Points / Ports** from the **Settings** menu.

Select the **Entrance** that will be used for DoorWatcher.

Click the **Actions** tab.

Specify the ACTIONS to take when member is successfully validated.

Record Visit:

Open Door/Turnstile

Play Check-In sounds

Display Member in Gym Assistant

Record as Check-Out

Record Tan Session

Send SMS to Member on Denied Entry

Send SMS to Club on Denied Entry:

Monitor door sensor   Play sound on door open/close

Record Video

*Note: We recommend that you uncheck Record Video while you are setting up the door sensor to prevent recording of activity until you confirm that door sensor is operating as it should.*

Check the **Monitor Door Sensor** checkbox.

Select **Normally-Closed** from the list.

Check the **play sound on door open/close** checkbox.

Click **OK**.

## Test the Door Sensor

When the door is closed, the entrance status should show "Controller Active".

Access Points

Door: Controller Active \*

When the door is open, the entrance status should show "Controller Active, Door is Open".

Access Points

Door: **Controller Active, Door is Open**

You should also hear a sound to indicate when the door is opened or closed.



If the Open/Close status is backwards (e.g. showing “open” then the door is closed), reverse the **Normally-Open/Normally-Closed** setting in GateKeeper.

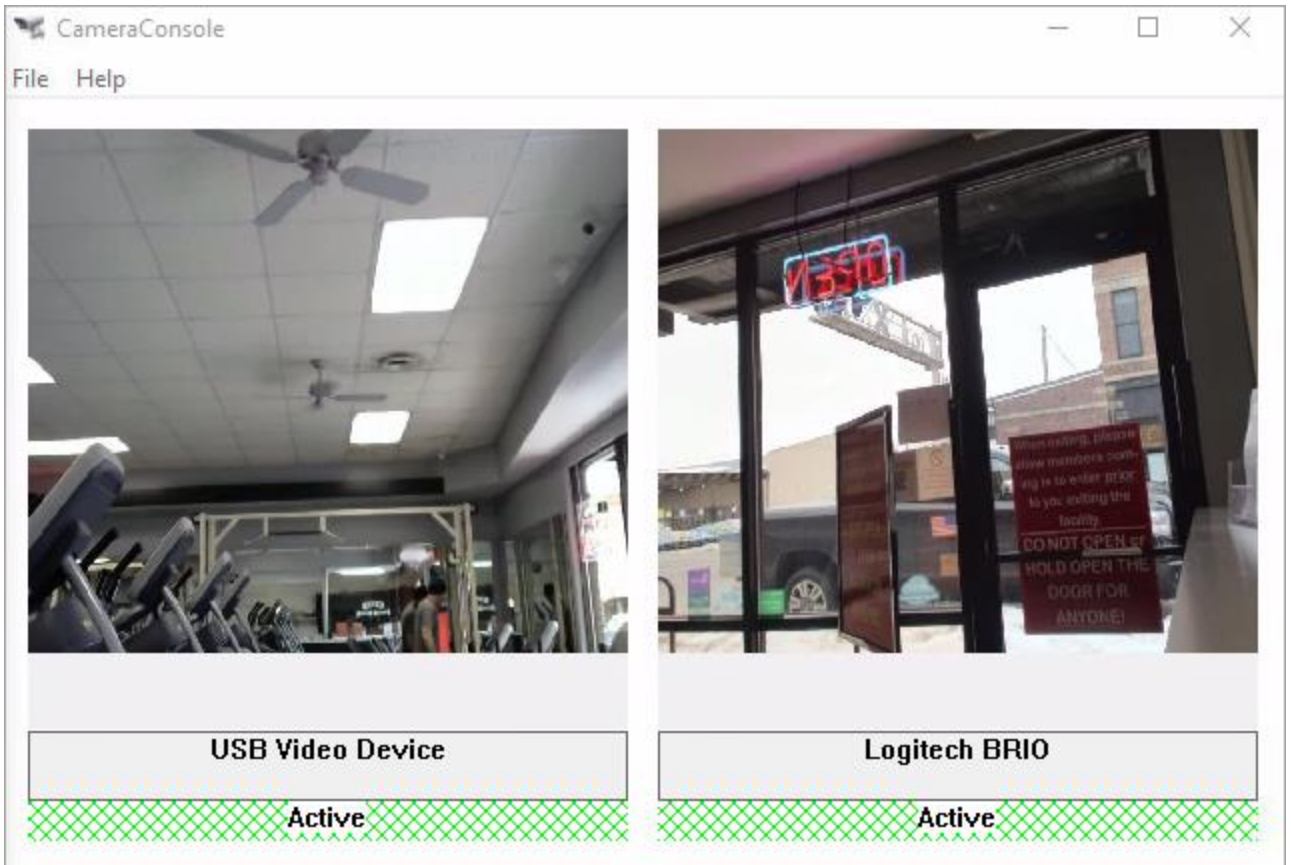
Once the door sensor is operating correctly you can re-enable the **Record Video** setting in GateKeeper.

## CameraConsole

The **CameraConsole** window will appear whenever DoorWatcher is watching the door.

You can minimize the CameraConsole, but it should remain open.

*Note: CameraConsole displays the view from all of your attached camera sources.*

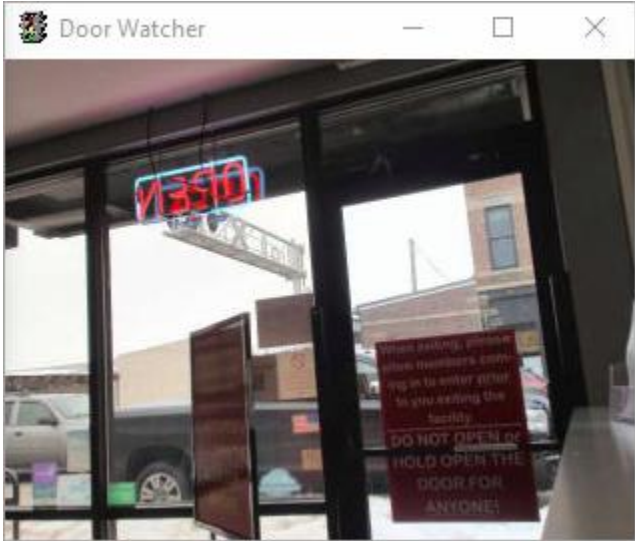


CameraConsole Window

When a member scans a card or the door is opened, CameraConsole will capture activity through the selected DoorWatcher camera.

# Display Last Captured Image

In GateKeeper, select **Show Last Image** from the **Watcher** menu.

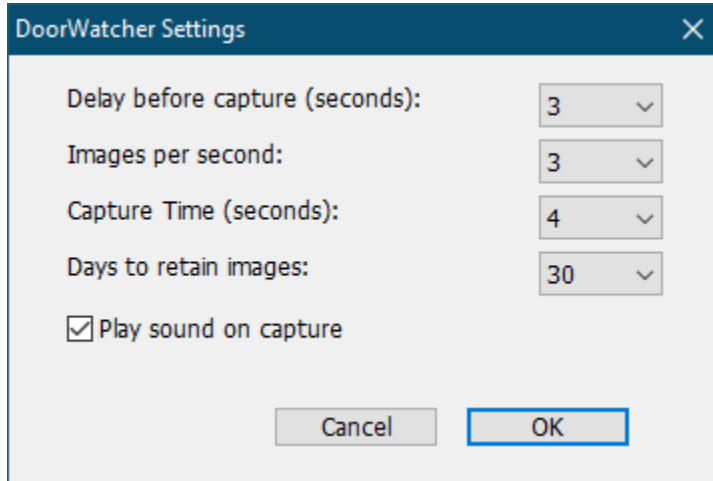


Last Captured Image Window

This will always show the last captured image.

## DoorWatcher Settings

Select **Settings** from the **Watcher** menu.



The screenshot shows a dialog box titled "DoorWatcher Settings" with a close button (X) in the top right corner. The dialog contains the following settings:

- Delay before capture (seconds): 3
- Images per second: 3
- Capture Time (seconds): 4
- Days to retain images: 30
- Play sound on capture

At the bottom of the dialog are two buttons: "Cancel" and "OK".

### Delay before capture

Sets the number of seconds to delay **after a card scan** before starting capture. Change this setting to optimize the timing of when image capture begins. There is no delay before capture when the door is opened.

### Images per second

The number of images (1-3) to capture per second.

### Capture Time

The number of seconds to capture images on an event (card scan or door open).

### Days to retain images

Specifies how much image data to retain. Captured images can consume considerable hard disk space, so we recommend setting this to 30 days or less.

### Play sound on capture

Check this box to play a brief sound on every image capture. This sound is useful when first using DoorWatcher to confirm that the images are indeed being captured.

## Viewing DoorWatcher Images

In Gym Assistant select **DoorWatcher Event Viewer** from the **Utilities** menu.