

Genius Device Setup for Gym Assistant Software

May 23, 2023



Introduction

The Global Payments (TSYS) Genius Payment Platform allows you to accept many forms of credit card payments: swipe, chip, tap and even ApplePay.

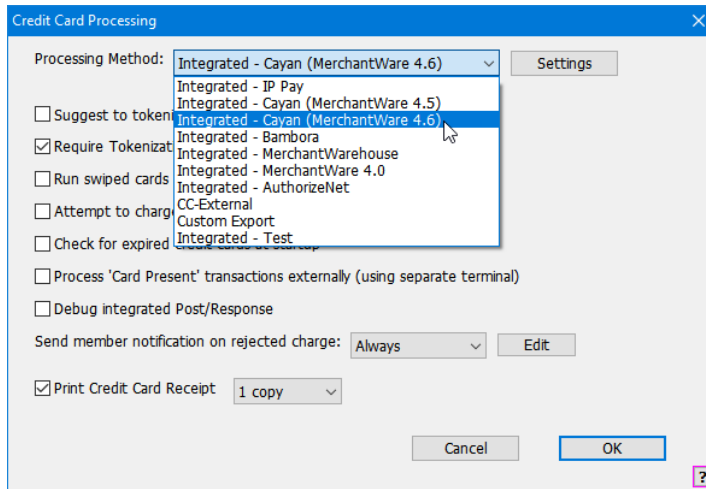
Device Setup

Setup your Genius device according to the instructions that came with the device.

- Attach the utility cable
- Attach the power adapter
- Connect your device to your network
- Check your connection

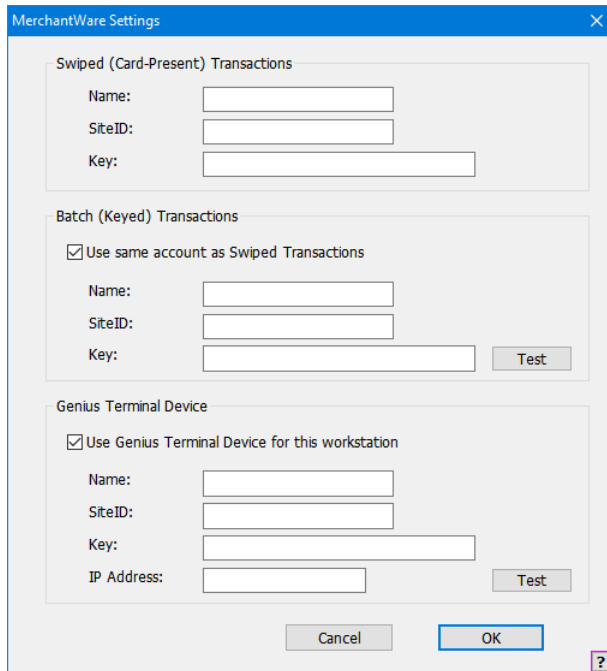
Gym Assistant Setup

In Gym Assistant select **Credit Card Settings** from the **Billing** menu.



Select the Processing Method **Integrated – Cayan (MerchantWare 4.6)**.

Click **Settings**.



Enter the **Account Name**, **SiteID** and **Key** that you received from Global Payments.

Under **Batch (Keyed) Transactions**, check **Use same account as Swiped Transactions** to copy those fields from the Swiped (Card-Present) Transactions section.

Click Test to test the Batch (Keyed) Transactions connection settings.

Under **Genius Terminal Device**, check **Use Genius Terminal Device for this workstation**.

Name, **SiteID** and **Key** field values should be copied automatically to the Genius Terminal Device settings.

Get the IP Address of your Genius device:

- Use the keypad to press 1, 5, and 9 at the same time.



- Tap **Com Control**.
- Tap **LAN** or **WiFi**.
- Tap **Configuration**, and then use the keypad to enter the password. The default password is 200331.
- Tap IPv4.
- Note the **IP Address**.

Enter the IP Address into the Gym Assistant Settings dialog.

Click **Test** to test the connection to your Genius device.

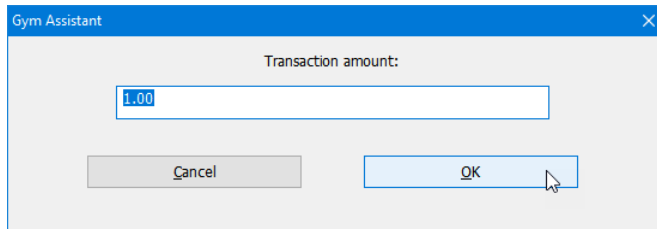
Click **OK**.

Run a Test Charge

Note: This procedure will put a \$1 charge on your credit card.

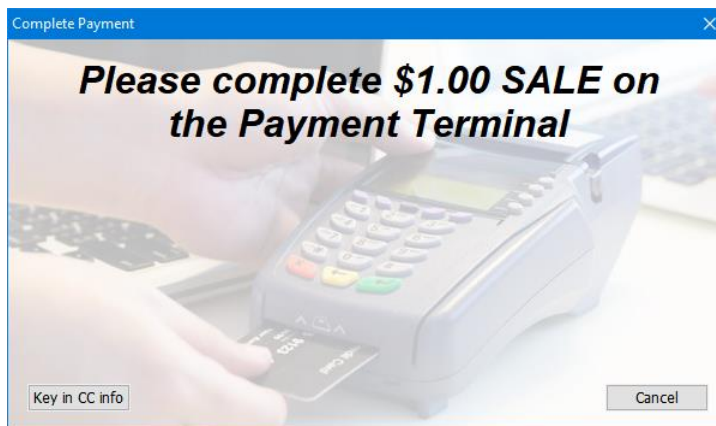
Select **Special Features** from the **Utilities** menu.

Select **Run Test CC Charge**, and click **OK**.



Click **OK**.

The Complete Payment window will appear.



Swipe the card, insert the card into the chip slot, or tap the card to complete the payment.

To Cancel the payment, click Cancel.

To manually enter a credit card number (not recommended), click Key in CC Info and follow instructions on the terminal.